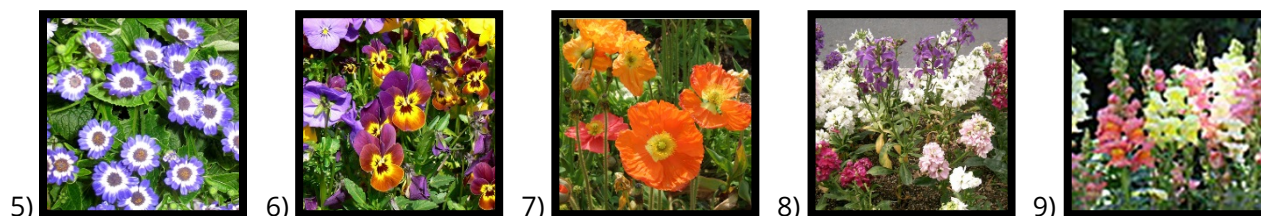


# Wegman's Nursery

## February Garden Tips

### ANNUALS



Winter annuals can be planted through late February. For shady spots, use 1) English Primrose, 2) Fairy Primrose, 3) Primula Obconica, 4) Cyclamen or 5) Cineraria. For sunnier spots, try 6) Pansies, 7) Iceland Poppies, 8) Stock, 9) Snapdragons, 10) Calendula, 11) Flowering Kale and 12) Cabbage or 13) Violas.

Sow seeds for Forget-Me-Nots directly into the garden (#14 shown above).

Don't forget to apply **Monterey Sluggo®** or **Deadline®** for **Slugs & Snails** after planting annuals. Watch for slug and snail damage as winter progresses and continue to bait as needed.



**If an unknown and mysterious creature is eating your Sweet Peas or Iceland Poppies**, look for white or gold-crowned sparrows. These little birds will hide in bushes and then dart out to feed on fresh greenery and young vegetables—especially Lettuce. If birds are the problem, cover the plants with **plastic bird netting** until they are about 12 inches tall. After that size, the birds will leave them alone.



## BULBS



Summer blooming bulbs are here! Check out our selection of 1) Gladioli, 2) Dahlias, 3) Calla Lilies, 4) Crocosmia, and more. Come early for the best selections! See our [Summer Bulbs Care Guide](#).

Plant Gladiolus bulbs about four times the depth of the bulb. If you plant the bulbs four to six inches apart, the stems of individual plants will act as stakes and support flowering spikes.

The key to strong and sturdy Dahlias is planting them in 12 inches deep holes and covering them with only 8 inches of amended soil. Let them grow those additional four inches then cover them with soil once more. Planted this way, Dahlias will develop strong and sturdy flower stalks. See our [Dahlias Care Guide](#).



Remember, when planting Tuberous Begonias leave about one-quarter inch of the growing tip exposed. See our [Tuberous Begonia Care Guide](#).

Divide Canna bulbs and transplant or share with friends (as shown in the picture on the right).



Prepare soil for bulbs by broadcasting a compost product such as **Master Nursery® Gold Rush** and working into the soil. Once you have planted bulbs, you can also broadcast a starter fertilizer such as **Master Nursery® Master Start**. Alternatively, you can add about 30% **Master Nursery® Gold Rush** and one tablespoon of **Master Nursery® Master Start** to individual holes, being sure to mix in well with native soil.

Apply **Master Nursery® Bulb Food** when bulbs break ground and again when they finish blooming. Do not use Bone Meal.

## FRUITS

Bare-root fruit tree season extends through the end of February. For the best selection, come early. Included are Apples, Peaches, Pears, Plums, Pluots, Apriums, Jujubees, mixed and multiple grafts, Figs, and more.

### TO PLANT BARE-ROOT FRUIT TREES:

- Dig a hole about two feet wide and as deep as the longest root so that the graft union remains 6 inches above the soil line once the soil has settled. (Topmost roots should remain an inch or less below soil line.)
- Set soil aside and mix in one-third **Master Nursery® Bumper Crop** or **Master Nursery® Gold Rush**.
- Place one-half cup starter fertilizer such as **Master Nursery® Master Start** at bottom of hole. Begin backfilling with soil mix. Situate tree so that graft union faces north. When about halfway filled, firmly pack soil around roots with foot, but do not compact! Continue filling.
- Use extra soil mix to construct a berm around the periphery of the hole.
- Water the filled area until the water stops bubbling.

See our [Planting Bare Root Trees Care Guide](#).

If you do not live in deer country, fruit trees should be pruned to about 3 feet so that primary scaffold branches develop low and ripe fruit is easily reachable.

Bare-root fruit trees have been sprayed with copper before shipping: no need to spray again!



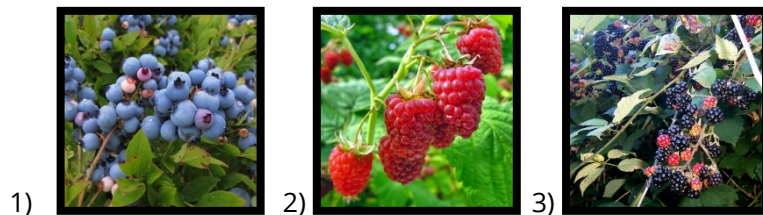
Watch for "bleeding" or oozing of sticky sap from stone fruit trees which may indicate Brown Rot. If the sap is clear, there is usually no problem, but amber-colored sap indicates a potential problem.

Test your citrus for flavor before picking the entire crop. Sweetness and flavor depend entirely on the amount of heat the tree has received during the growing season and varies within the county. Only additional sun and solar heat can sweeten the fruit. Wait until one or two fruits have fallen by themselves and then taste them.

Grafting should be done mid-February.

Prune all deciduous fruit trees by the end of February and spray once with a mixture of **Monterey Liqui-Cop®** and **Master Nursery® Pest-Fighter Year-Round Spray Oil** (see the following for Peaches and Nectarines). Be sure there will be no rain for 24 hours after spraying. Once trees are in flower, do not spray with oil. Other fungal diseases may necessitate copper spray(s) during bloom.

The first week of February should mark the third and final spraying for Peach and Nectarine trees. Use **Monterey Liqui-Cop** (40% fixed copper) plus **Master Nursery® Pest-Fighter Year-Round Spray Oil**. Do not spray once trees are in flower! Mix two tablespoons of **Monterey Liqui-Cop®** with eight tablespoons of the oil in one gallon of water and spray the pruned tree until it drips.



Prune Blueberries (1) through the end of February.

Prune and tie up all Grapes and Cane Berries (e.g., (2) Raspberries and (3) Blackberries) through the end of February.

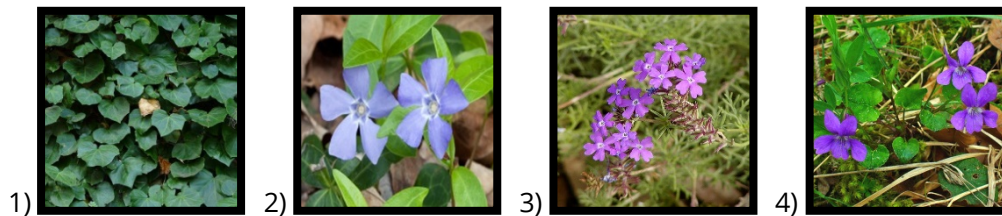
Citrus should be pruned late February or early March if needed. Check now for scale, a sucking insect that usually clusters along fruit stems, new growth and the undersides of leaves. If found, spray tree with horticultural oil. Wait two weeks between applications. Never spray oil more than four times during the growing season. If you suspect leaf miners in the youngest leaves of your citrus, bring a sample to the nursery for identification and see the **Citrus Care Guide** for options of care.

In cold winter areas or for extra winter protection, spray citrus with **Bonide® Wilt Stop®**, a polymer which prevents desiccation during frost. You can also cover citrus with a protective frost blanket called **N-Sulate**.

Pick up fallen fruit, remove dried fruit on trees ("mummies"), and rake leaves, placing all debris in trash. Do not compost! Fruits and leaves may harbor overwintering insect pests and fungi; removing both decreases the incidence and proliferation of pests and diseases the next growing season.

If you missed fertilizing your fruit trees around Labor Day or subscribe to the old theory of fertilizing in the spring, then apply **Master Nursery® Fruit Tree and Vine Food** about Valentine's Day.

## GROUNDCOVERS



Mow low-growing groundcovers such as 1) Ivy, 2) Periwinkle and 3) Peruvian Verbena; then fertilize with **Master Nursery® Formula 49™**.

Slugs and snails are especially abundant and troublesome this time of year, reproducing and resting in groundcovers. Baiting now will help minimize extant populations and minimize damage in the coming spring. Use **Monterey Sluggo®**, safe for pets and people, or **Deadline®**, very effective but toxic to pets and people.

## LAWNS

Spread seed or lay sod at the end of February. Timing planting with the beginning of spring will help seed germinate faster and sod root in more quickly. Sod orders placed with Wegman's usually take two to three days for delivery. Call us for details!

Remember that seeded or sodded lawns require the same preparation: rototilling, amending and weed removal.

Feed lawns with **Master Nursery® Fall & Winter Feed for Lawns**.

If you have had problems with Crabgrass switch from **Winter Feed** to **Master Nursery® Pre-Emergent Crabgrass Control Plus with Lawn Food**. If you desire a non-toxic product, use **Concern® All-Natural Weed Prevention Plus®**, which also targets Broadleaf Weeds. Remember, a pre-emergent will not kill established perennial weeds.

For Oxalis, use **Hi Yield Triclopyr Ester**, a liquid that can be sprayed over the entire lawn. Because Oxalis is so tenacious, several applications may be needed.

Set mowers to two inches for Fescue and Bluegrass lawns through February.

With the onset of rain and moister weather, Bluegrass lawns may show yellowing or spots of yellow caused by rust. This should disappear towards the end of February, when temperatures warm.

**REMEMBER: YOU CANNOT USE HERBICIDE OR PRE-EMERGENT PRODUCTS FOR THREE TO FOUR MONTHS PRIOR TO SEEDING OR RESEEDING A LAWN OR LAYING SOD!**

## PERENNIALS



Perennials such as 1) Shasta Daisies, 2) Agapanthus or 3) Penstemon) which may have become crowded or which do not bloom as vigorously as in the past should be divided now. Dig the whole clump and gently separate into parts or hose off all the soil and divide. Amend soil one-quarter to one-third with **Master Nursery® Gold Rush** or **Master Nursery Bumper Crop** and replant the divisions. Fertilize the new plantings after two to three months with **Formula 49** or **Master Nursery® Rose & Flower Food**.

Fertilize all perennials with **Master Nursery® Formula 49™** or **Master Nursery® Rose & Flower Food**.

Start Mum cuttings now.

All ornamental grasses should be cut back by the middle of the month and fertilized with **Master Nursery® Formula 49™**.



Evergreen perennials such as 1) Penstemon, 2) Lavender, 3) Salvias, 4) Buddleia, and 5) Artemisia should be pruned back now if they haven't been. Pruning your evergreens keeps them compact and dense and new growth makes plants appear fresher.



If you pruned or cut back your perennials last month, succulent new growth should begin to appear at the bases of these plants; ripe feasting for slugs and snails! Bait now with **Monterey Sluggo®** or **Deadline®**. Especially vulnerable are perennials such as 1) Columbine, 2) Hosta and 3) Delphinium.

## ROSES

Prevent weeds in Rose beds by applying **Concern® All-Natural Weed Prevention Plus® (8-2-4)**. This product contains corn gluten, which prevents seeds from germinating and contains 8% Nitrogen, providing slow-release fertilization.

Roses should be pruned by the end of February. Spray with **Monterey Liqui-cop®** and **Master Nursery Year-Round Spray Oil** (six tablespoons of oil and two tablespoons of copper in a gallon of water) before leaves emerge. If new leaves are already sprouting, they may be burned by the spray but will soon be replaced by new leaves. See our [Pruning Roses Care Guide](#).

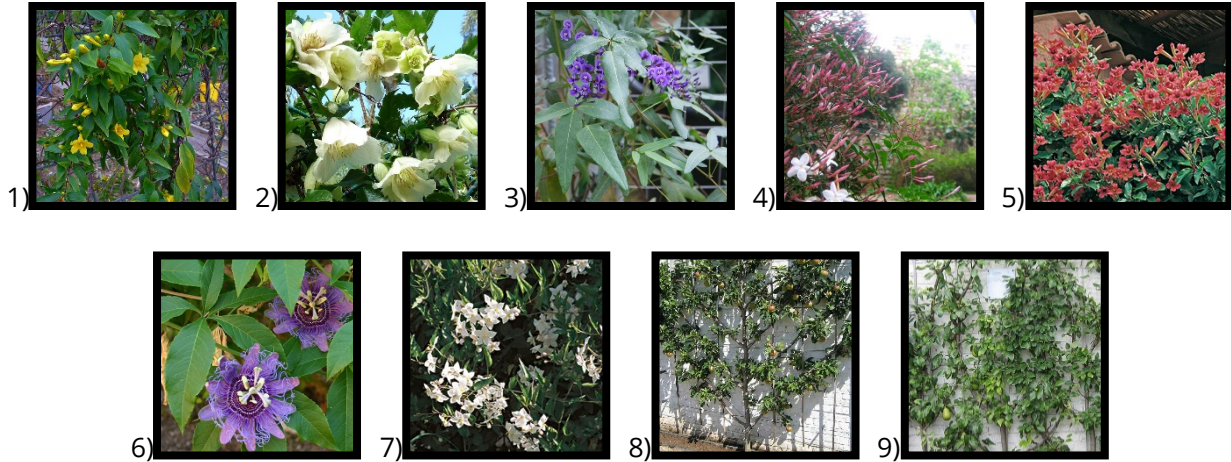
After pruning and during the cutting season, remember to cover all cuts over one-quarter inch with **Bonide® Pruning Sealer** or similar material to prevent cane borers from laying eggs in the soft pith.

As new leaves emerge, begin monthly feedings with **Master Nursery® Rose & Flower Food**. You can supplement with two applications of **alfalfa meal**: once in late February or early March and again in July. Alfalfa contains the chemical triacontanol, which spurs the formation of new canes.

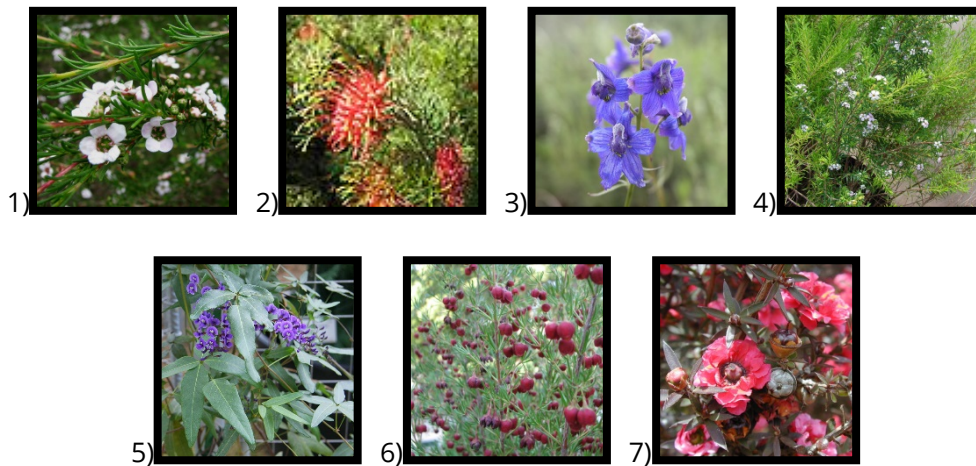
If you prefer to use a systemic insecticide with fertilizer, begin applying at the end of the month, then every six weeks through late April. By discontinuing use of this product as summer approaches, you reduce the risk of disfiguring flowers and foliage. Avoid insecticides containing imidacloprid which is deadly to bees.

## SHRUBS & VINES

Due in February is our big spring Rhododendron shipment. We carry an exceptional selection of sizes and colors, including orange and yellow bloomers.



Consider planting vines in those narrow places which don't provide enough space for regular shrubs and trees. 1) Carolina Jessamine, 2) Evergreen Clematis, 3) Hardenbergia, 4) Pink Jasmine, or 5) Trumpet Vines make excellent choices, though they hardly exhaust the possibilities! Consider interplanting spring bloomers and summer bloomers, such as 4) Pink Jasmine and 6) Passion Vine or 3) Hardenbergia and 7) Potato Vine. An Espaliered 8) Apple or 9) Pear Tree is another possibility.



The garden wakes up about mid-February as many of the Mediterranean climate natives begin to bloom. Check out 1) Astartea, 2) Grevillea, 3) Eriostemon, 4) Coleonema, 5) Hardenbergia, 6) Boronia, and 7) Leptospermum. While you may not be familiar with these plants, they make excellent additions to the landscape with their early bloom, deer-resistance, and tolerance to wet winters and dry summers. Many are fragrant as well!



Wait to prune spring bloomers until after they bloom. This includes the evergreens, such as 1) Hardenbergia, 2) Bank's Rose, and 3) Pink Breath of Heaven, and deciduous shrubs such as 4) Forsythia, 5) Spiraea and 6) Common Snowball.



1) Wisteria should be pruned before it blooms. Establish a main framework of canes or branches and cut all secondary growth back to two or three buds.

Now's a good time to select 2) Camellias and 3) Azaleas, as their flurry of color unfolds. Also check out 4) Sarcococca, one of the few plants that blooms reliably in deep shade and adds a delicious fragrance to the garden.



**Both Camellias and Azaleas are susceptible to petal blight**, which appears as brown splotching on petal margins of open flowers, partly open flowers and flower buds. A fungus causes both petal blights. Camellia petal blight can be controlled through sanitation: remove infected flowers and buds and try not to let infected petals hit the ground. If they do, gather and place in trash immediately; do not compost! Azalea petal blight is controlled by spraying with



**Bonide® Fung-onil™.**



Prune hardy shrubs such as: 1) Rosemary, 2) Escallonia, 3) Abelia, 4) Common Myrtle, 5) Texas Privet, and 6) Pittosporum now.



Prune tender shrubs and vines (25°F-30°F) such as: 1) Potato Vine, 2) Bougainvillea, 3) Abutilon, 4) Geraniums, 5) Lantana, and 6) Fuchsia after Valentine's Day.

Because Fuchsias have fast-growing roots, if you grow them in containers, they should be repotted yearly, usually by late February. Plant up into larger containers or root-prune. If you prune the roots, also remove about one-quarter to one-third of the top (crown) and repot in **Gardner & Bloome® Organic Potting Soil**. Spray with **GardenTech Sevin®** to prevent Fuchsia mite damage.



Now is the time to prune garden Hydrangeas (*Hydrangea Macrophylla*), if you haven't already. This species blooms on new growth from one-year old wood; aim your pruning cuts just above the largest pair of buds on this wood. If powdery mildew has been a problem during the summer months or to prevent it, spray Hydrangeas with copper and oil after pruning and again during the growing season (see [Hydrangea Care Guide](#)).

This month marks the next to last application of **Aluminum Sulfate** (blue) or **lime** (pink) to intensify Hydrangea flower color. Use **Oyster Shell Lime**, which contains calcium carbonate, an excellent addition to our soils. Dolomite lime, on the other hand, contains magnesium, of which we already have plenty in our native soils.

Be sure to rake up leaves from deciduous shrubs, especially those infected with powdery mildew. Discard in trash containers rather than compost piles. Most of our home compost piles reach sufficient temperatures to break down food and yard waste, but they don't typically reach temperatures (140°F+) required to destroy harmful fungi and bacteria.



Gardenias: If the flowers buds on your Gardenias turn brown and drop off before opening, it is probably due to thrips insects. **Bayer 12-Month Tree & Shrub 2-1-1 Protect & Feed** containing Imidacloprid will control the thrips (and aphids). Bees do not visit Gardenias so this will not be a problem.





## TREES



Come check out our selection of Deciduous 1) Magnolias as they begin to bloom! We carry the classic saucer Magnolia as well as some more unusual varieties that stay within 15 to 20 feet and feature distinctively different flower forms and colors.

Wait to prune flowering 2) Cherries, 3) Plums and 4) Pears until after bloom. If you have had problems with Shot-Hole fungus (as shown here on the right) on Cherries or Plums, spray before flowering with **Monterey Liqui-Cop®**.



Bare-root season extends through February! Come in now for a great selection of fruit trees as well as flowering trees, such as flowering Cherries, Plums and Pears. We also have shade trees, such as European Birches. To plant, follow directions for planting bare-root fruit trees, listed above under the **FRUIT** Section or download the printable instructions.

The first shipments of Japanese Maples will arrive towards the end of February. These trees are field-grown in Oregon, then planted in containers and held for one additional year to root-in and be pruned to shape. This year's selection includes Bloodgood, Bonfire, Burgundy Lace, Fireglow, Emperor I, Oshio Beni, Red Dragon, Shaina, Seiryu, Shishigashira, Sango Kaku, Crimson Queen, Garnet, Inabe Shidare, Tamukeyama, Viridis, and Waterfall.

Be sure to rake leaves from deciduous trees, discarding diseased leaves in trash containers rather than compost piles. If leaves are healthy, consider mulching your garden beds with them. Not only does mulch reduce soil compaction during the rainy months, it adds valuable organic material to the soil as it composts directly on the beds. In turn, this organic material conditions our clay soils, improving drainage and making nutrients more accessible.

Look for broken and torn branches after storms. Prune to healthy tissue, using heading cuts if parts of branches have broken or torn and removing entire branches if needed. Consulting a simple, informative book such as **Ortho's All About Pruning** will help you determine where to prune and how to make the proper cut. If severe damage is done to older, mature trees, we strongly encourage you to seek the services of a certified arborist. While you may pay more for their work, you can be assured that the health and longevity of your trees will not be compromised by poor practices such as topping and incorrect cuts.

## VEGETABLES



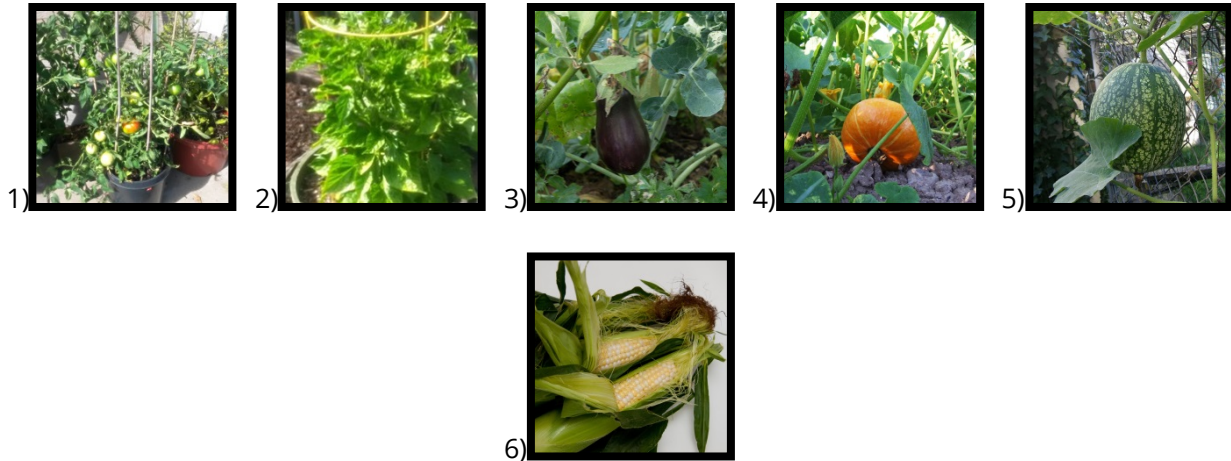
Now is the time to plant: Asparagus (1), Horseradish (2), Rhubarb (3), and Artichokes (4).



Continue planting: 1) Onions from starts and 2) Garlic from cloves.



Plant seed Potatoes now.



Start planting seeds for: 1) Tomatoes, 2) Peppers, 3) Eggplants, 4) Squash, 5) Melons, and 6) Corn indoors or in greenhouses.

## OTHER THINGS TO DO

Check your potted plants to see whether they will need repotting this season. If so, repot at the end of the month. You can plant up into larger containers or root-prune and replant in the same container. When root-pruning, prune away one-quarter to one-third of the root mass and repot in **Gardner & Bloome® Organic Potting Soil** then remove one-quarter to one-third of the top part of the plant (crown) to compensate for the loss of roots.

Begin fertilizing containerized plants with an appropriate granular fertilizer at the end of the month. Continue monthly through October.

Repot Orchids every two or three years when they have finished blooming.

Clean the leaves of your indoor plants twice a year with **Green Glo Plant Polish** to remove dust and dirt and to kill any insects on the plant.

Sharp pruning tools make clean cuts that heal quickly. Check out our Pruning Tool Renovation Service, which includes cleaning and sharpening and replacing missing parts for most pruners. If you're unsure whether we can service your tool, bring it in for assessment.